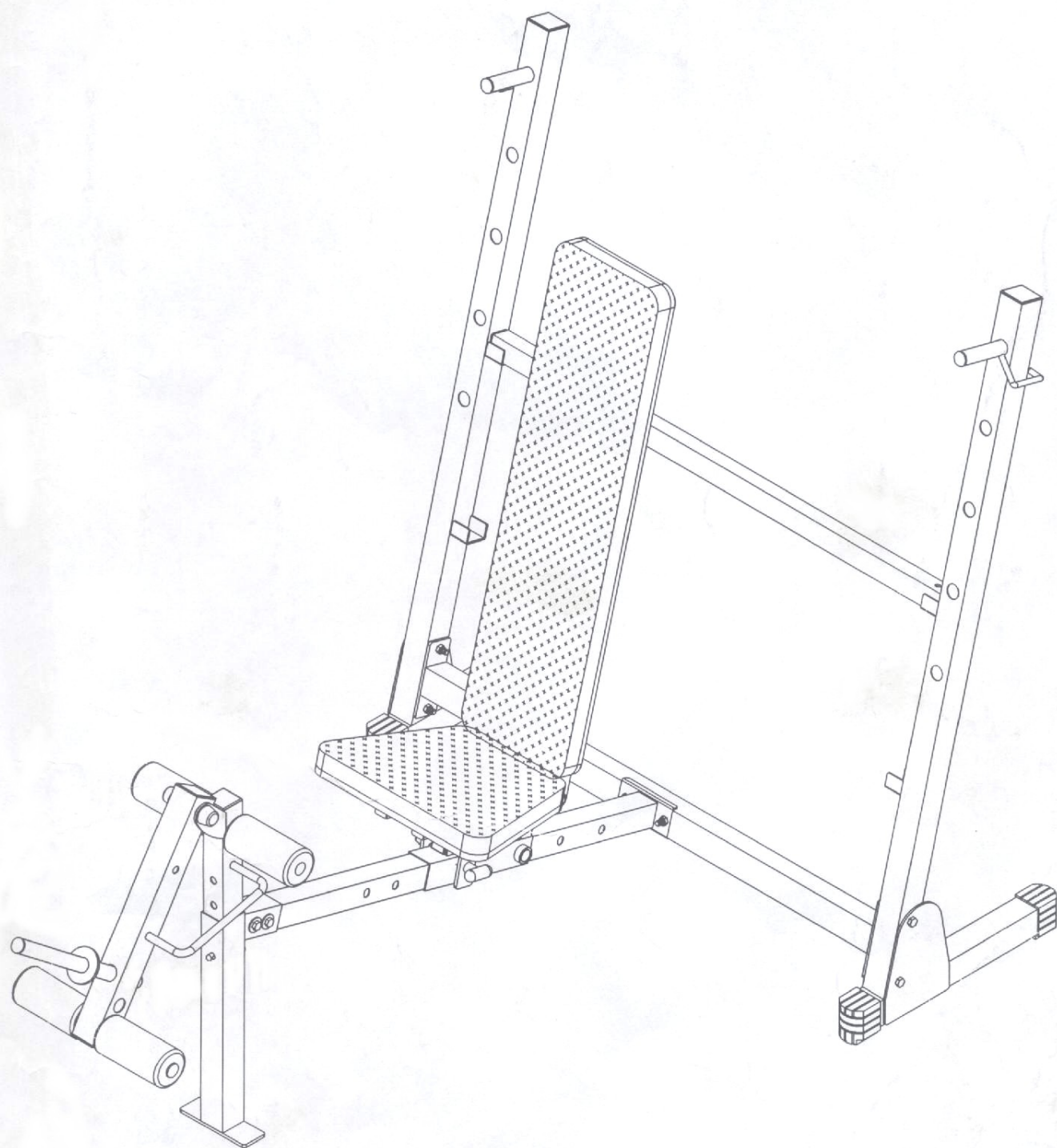
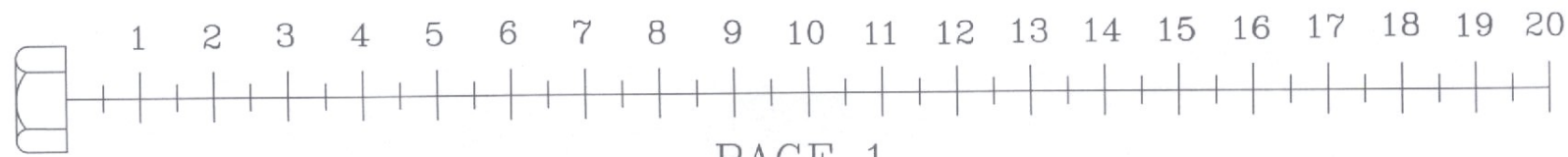
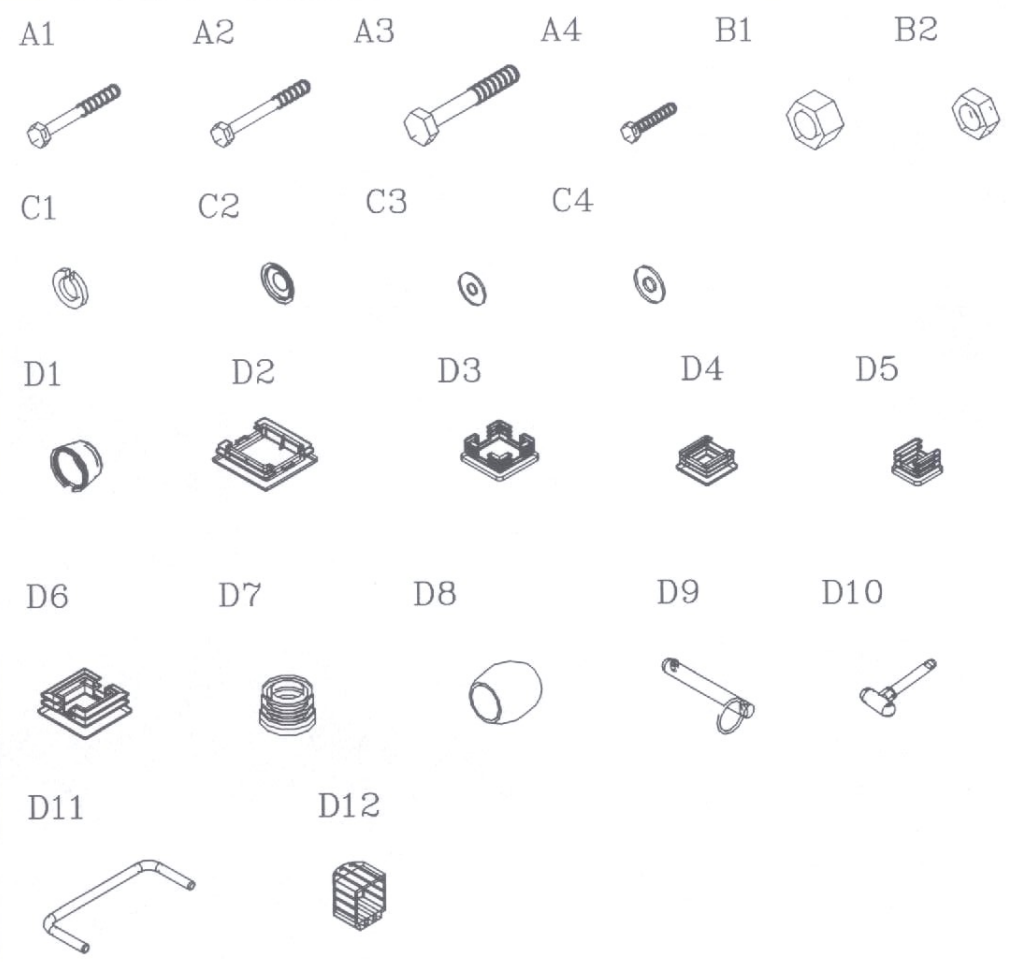


POB-44



VERSION 0003

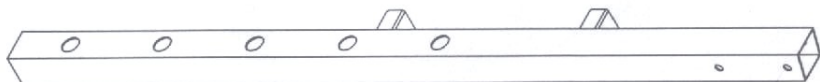
	Qty.
A1. M10X70 HEX HEAD BOLT -----	[4PCS]
A2. M10X75 HEX HEAD BOLT -----	[4PCS]
A3. 1/2"X85 HEX HEAD BOLT-----	[1PCS]
A4. 5/16"X45 HEX HEAD BOLT -----	[10PCS]
B1. 1/2" NYLON LOCK NUT -----	[1PCS]
B2. M10 NYLON LOCK NUT -----	[8PCS]
C1. M8 SPRING WASHER -----	[10PCS]
C2. 1/2" ROUND END WASHER -----	[2PCS]
C3. M8 (I.D.) WASHER -----	[10PCS]
C4. M10 (I.D.) WASHER -----	[6PCS]
D1. P.V.C. BOLT CAP -----	[2PCS]
D2. 2"X2" END CAP (9211-005)-----	[4PCS]
D3. 1 1/2"X1 1/2" END CAP (9211-003)-----	[2PCS]
D4. 1 3/16"X1 3/16" END CAP (9211-002)-----	[2PCS]
D5. 1"X1" END CAP (9211-001) -----	[4PCS]
D6. 1 3/4"X1 3/4" END CAP (9211-004)-----	[1PCS]
D7. ø1" ROUND END CAP (9211-016)-----	[9PCS]
D8. ø1" RUBBER CANE CAP (9212-019)-----	[1PCS]
D9. QUICK RELEASE RING PIN (8250-015) -----	[1PCS]
D10. QUICK RELEASE BALL PIN (8250-017)-----	[1PCS]
D11. SAFETY HOOK (8240-022) -----	[1PCS]
D12. 2"X2" FOOT CAP (9212-003)-----	[4PCS]



A-1 [1PCS]



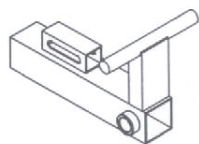
A-2 [1PCS]



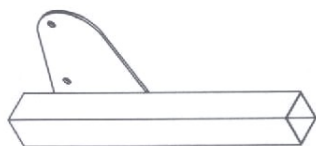
B-1 [1PCS]



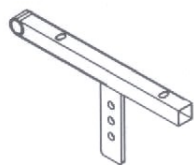
E [1PCS]



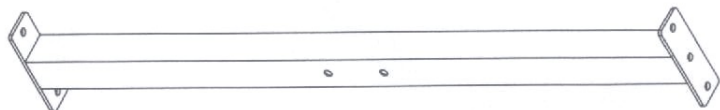
B-2 [1PCS]



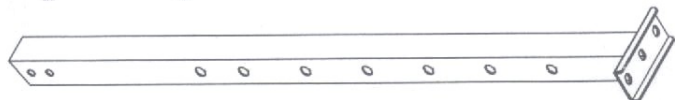
F [2PCS]



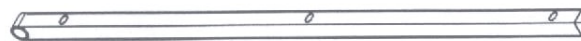
C [1PCS]



D [1PCS]



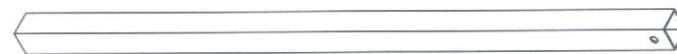
G [2PCS]



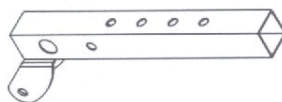
H [2PCS]



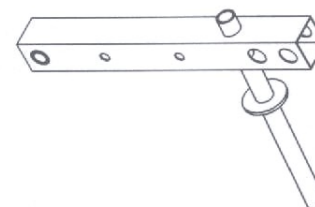
I [1PCS]



J [1PCS]



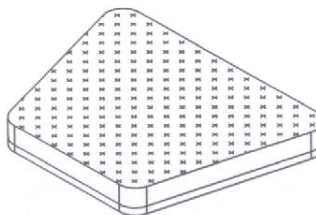
K [1PCS]



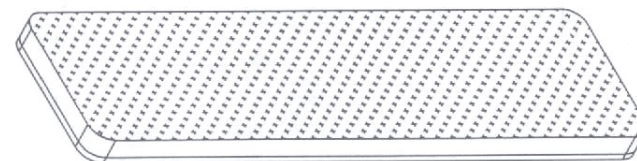
L [1PCS]



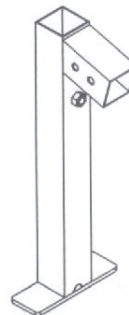
M [1PCS]



N [1PCS]



O [1PCS]



P [4PCS]



Q [1PCS]



POB-44

